

Parts & Service Manual

**1988 200-SERIES
B-CHASSIS**

F2-09K401 220-4-spd

E2-13K501 222-5-spd

E2-17K501 227-5-spd

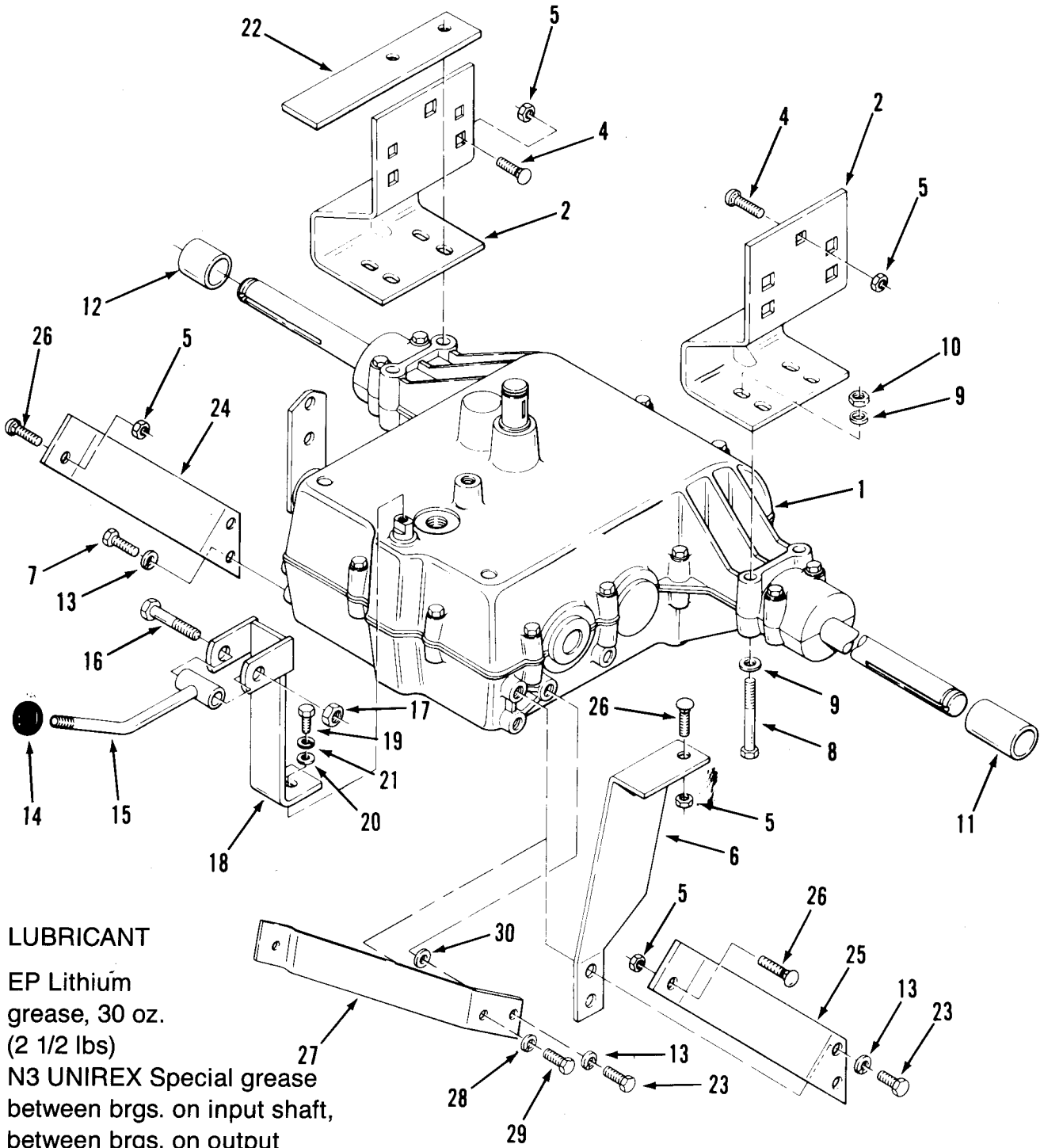


LIST OF ILLUSTRATIONS

1

TITLE	FIGURE NUMBER	PAGE
Section 3		
4 & 5 Speed Transmission	3-1	2
Section 5		
Front Axle and Steering (Mower Hanger)	5-1	4
Section 6		
Brake and Clutch Linkage	6-1	6
Section 7		
Attachment Lift	7-1	8
Section 8		
Frame, Sheet Metal and Covers	8-1	10
Frame, Sheet Metal and Covers	8-2	12
Section 9		
Engine and Fuel and Exhaust Systems	9-1	14
Section 11		
Electrical System	11-1/2	16-18-20
Section 13		
Wheels and tires	13-1	22
Section 14		
Clutches and Pulleys	14-1	24
PTO Clutch	14-2	26
Section 15		
Seat and Suspension	15-1	28
Decals, Miscellaneous	15-2	30

SECTION 3 - TRANSMISSION



LUBRICANT

EP Lithium grease, 30 oz.
(2 1/2 lbs)

N3 UNIREX Special grease
between brgs. on input shaft,
between brgs. on output
shaft & cavity created
by casting & countershaft

No periodic req'd



3 & 5-Speed Transmission

0327

SECTION 3 - TRANSMISSION

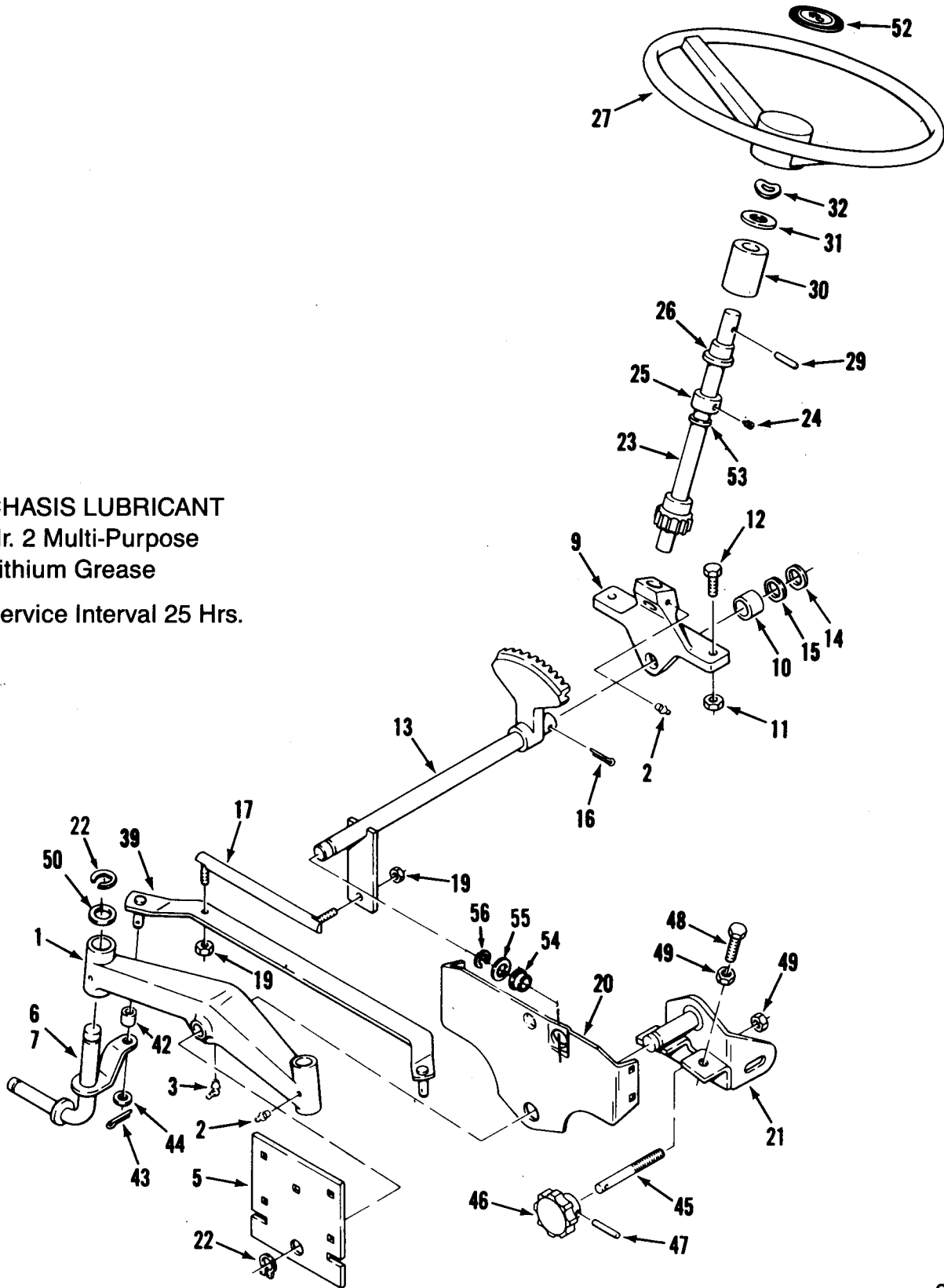
ITEM	PART NUMBER	DESCRIPTION	Quantity
Figure 3-1			
3 & 5-SPEED TRANSMISSION			
1	109920*	Transmission - 5 - Speed Peerless Model 822	1
1	112470*	Transmission - 4 - Speed Peerless Model 900	1
2	108793	Bracket - Rear Axle - 5 - Speed Only	2
2	107970	Bracket - Rear Axle RH - 4 - Speed Only	1
2	110295	Bracket - Rear Axle LH - 4 - Speed Only	1
4	900036	Carriage Bolt 5/16-18 x 1	6
5	915112	Eslok Nut 5/16-18	7
6	108792	Torque Strap 5-Speed Only	1
6	113904	Torque Strap 4-Speed Only	1
7	926720	S.T. Bolt 5/16-18 x 3/4 - (1) Used on 4-Speed	2
8	908025	Bolt 5/16-18 x 2 1/2	4
9	920008	Washer 5/16 SAE	8
10	915112	Eslok Nut 5/16-18 - (5) Used on 4-Speed	4
11	108421	Axle Spacer LH 5-Speed Only	1
11	110201	Axle Spacer LH 3-Speed Only	1
12	108420	Axle Spacer RH 5-Speed Only	4
13	920082	Lockwasher 5/16 - (2) Used On 4-Speed	4
14	108758	Knob	1
15	109638	Shift Rod	1
16	908040	Bolt 3/8-16 x 2 1/2 - 5-Speed Only	1
16	908038	Bolt 3/8-16 x 2 - 4-Speed Only	1
17	915113	Eslok Nut 3/8-16	1
18	114517	Shift Lever - Lower 5-Speed Only	1
18	110192	Shift Lever - Lower 4-Speed Only	1
19	908153	Bolt 1/4-28 x 7/8 - 5-Speed Only	1
20	104869	Special Washer	1
21	920081	Lockwasher 1/4	1
22	108396	Brake Stop Bar 5-Speed Only	1
22	110163	Brake Stop Bar 4-Speed Only	1
23	926697	Swage Form Bolt 5.16-18 x 1 - (1) Used on 4-Speed	2
24	110798	Torque Strap RH 5-Speed Only	1
24	110190	Torque Strap RH 4-Speed Only	1
25	110797	Torque Strap LH 5-Speed Only	1
26	900037	Carriage Bolt 5/16-18 x 3/4	3
27	110296	Torque Strap LH 4-Speed Only	1
28	920081	Lockwasher 1/4 - 4-Speed Only	1
29	926673	S.T. Swage Screw 1/4-20 x 3/4 - 4-Speed Only	1
30	920007	SAE Washer 1/4 - 4-Speed Only	1

* Order Replacement Parts or Complete Assembly through manufacturer's distribution system, using model/spec. number shown.

WHEEL HORSE Part Number is listed for cross-reference purposes only; item **is not available** through WHEEL HORSE.

SECTION 5 - FRONT AXLE AND STEERING

CHASIS LUBRICANT
 Nr. 2 Multi-Purpose
 Lithium Grease
 Service Interval 25 Hrs.



0536

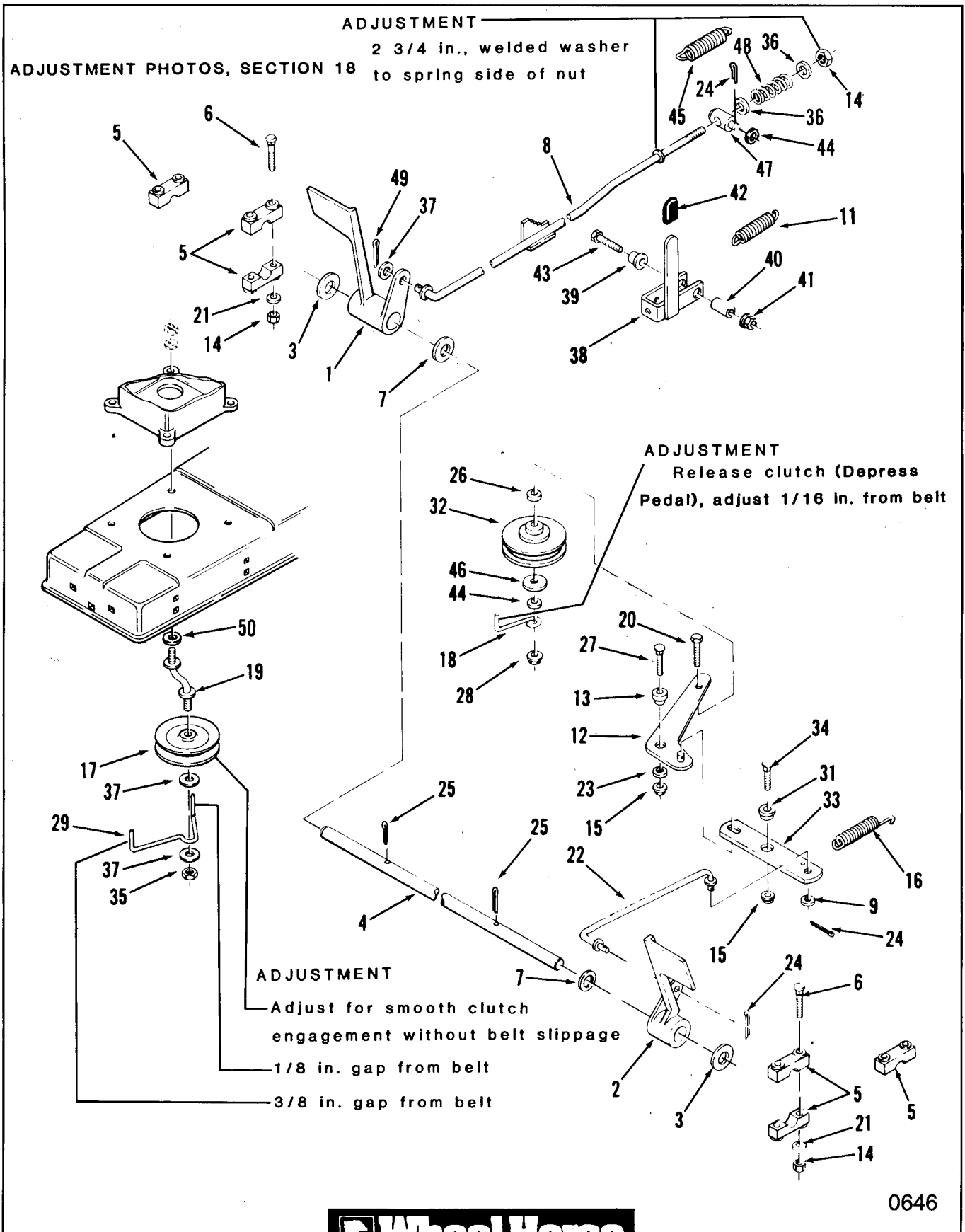


Figure 5-1 Front Axle and Steering (Mower Hanger)

SECTION 5 - FRONT AXLE AND STEERING

ITEM	PART NUMBER	DESCRIPTION	Quantity
Figure 5-1			
FRONT AXLE AND STEERING (MOWER HANGER)			
1	106199	Axle - Front	1
2	1030	Grease Fitting	3
3	1481	Grease Fitting	1
5	108910	Plate - Front Axle	1
6	113818	Front Spindle Assy RH	1
7	113819	Front Spindle Assy LH	1
9	109733	Support	1
10	6397	Bushing	1
11	915663	E.S. Nut 3/8-16	2
12	908034	Bolt 3/8-16 x 1	2
13	112698	Lower Steering Shaft Assy	1
14	5210	Shim Washer .015	X
15	1278	Shim Washer .050	X
16	932035	Cotter Pin 3/16 x 1 1/4	1
17	1773	Ball Joint Assy	1
19	915002	Eslok Nut 3/8-24	4
20	111361	Support - Front Axle	1
21	114949	Front Hanger (Mower)	1
22	104822	Retaining Ring 3/4	3
23	106311	Upper Steering Shaft Assy	1
24	909848	Cup Pt Set Screw 1/4-20 x 1/4	1
25	1085	Shaft Collar	1
26	109189	Bushing	1
27	106055	Steering Wheel 222-5, 220-4	1
	102715	Steering Wheel 227-5	1
29	933221	Spirol Pin 1/4 x 2	1
30	113444	Collar	1
31	109262	Special Washer	X
32	7896	Bowed Washer	1
39	108230	Tie Rod	1
42	5943	Spacer	2
43	932017	Cotter Pin 1/8 x 1	2
44	920242	Special Washer	2
45	112477	Rod	1
46	101851	Knob	1
47	933156	Roll Pin	1
48	908035	Bolt 3/8-16 x 1 1/4	2
49	109779	Jam Nut 3/8-16	3
50	1278	Washer	2
53	111646	Grip Ring	1
54	106950	Bushing	1
55	920219	Special Washer	1
56	108226	Ring	1

SECTION 6 - BRAKE AND CLUTCH LINKAGE



0646

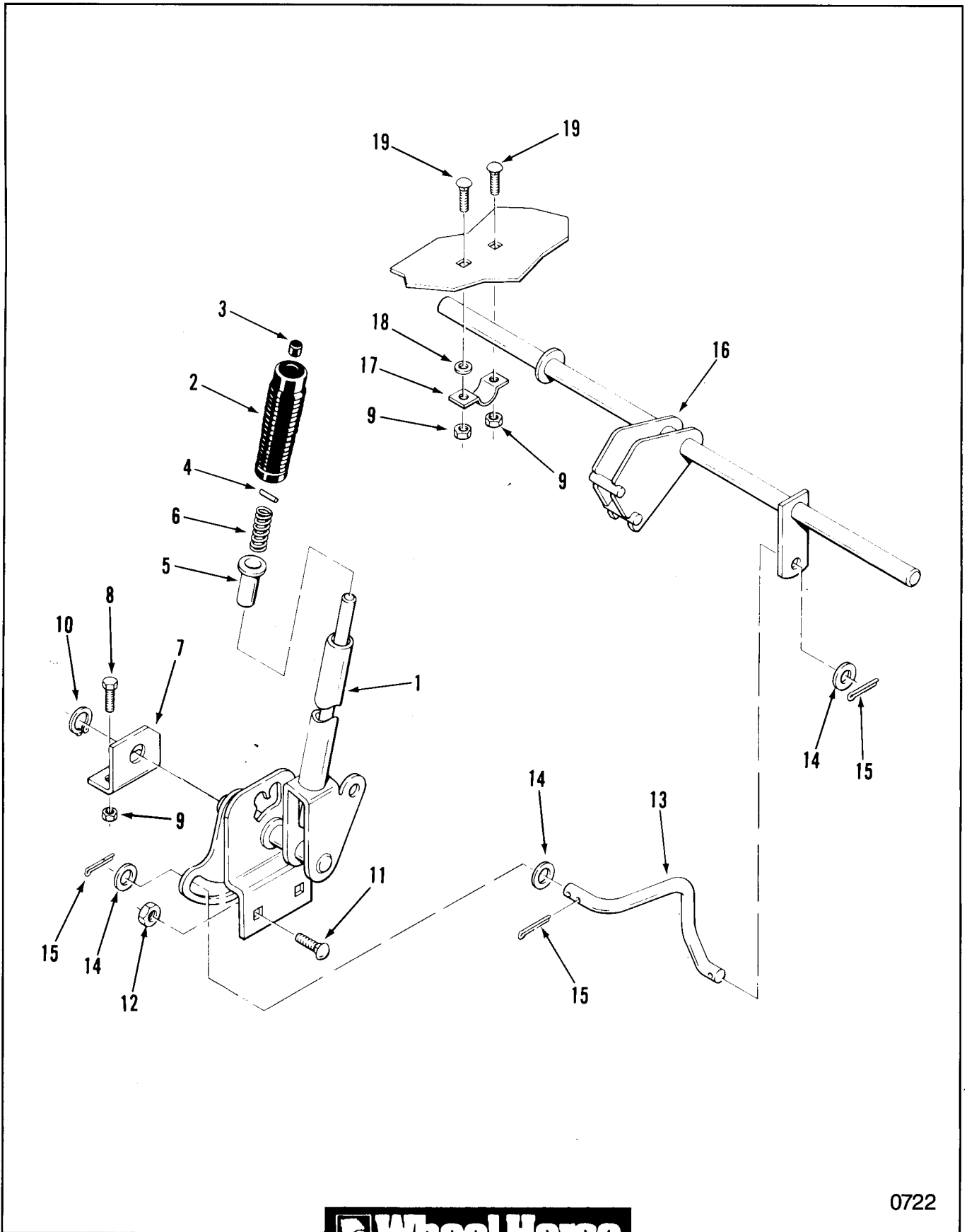


Figure 6-1 Brake and Clutch Linkage

SECTION 6 - BRAKE AND CLUTCH LINKAGE

ITEM	PART NUMBER	DESCRIPTION	Quantity
Figure 6-1			
BRAKE AND CLUTCH LINKAGE			
1	108602	Pedal - Brake	1
2	110621	Pedal - Clutch	1
3	920260	Special Washer	2
4	108279	Shaft - Pedal	1
5	106585	Block Pivot	6
6	900041	Carriage Bolt 5/16-18 x 1 3/4	4
7	920215	Special Washer	2
8	108797	Brake Rod 5-Speed Only	1
8	110637	Brake Rod 4-Speed Only	1
9	920008	Washer 5/16	1
11	103628	Spring	1
12	106304	Idler Arm	1
13	106203	Spacer - Idler Arm	1
14	915112	Eslok Nut 5/16-18	5
15	102809	Flange Locknut 3/8-16	2
16	6533	Clutch Spring	1
17	8205	"V" Idler Pulley	1
18	103408	Belt Guide - Flat Idler	1
19	108923	Rod	1
20	908039	Bolt 3/8-16 x 2 1/4	1
21	920008	Washer 5/16 SAE	4
22	106202	Rod - Clutch	1
23	920249	Special Washer	1
24	932016	Cotter Pin 1/8 x 3/4	3
25	932025	Cotter Pin 5/32 x 1	2
26	104525	Spacer - Flat Idler	1
27	900066	Carriage Bolt 3/8-16 x 1 3/4	1
28	102809	Flange Locknut 3/8-16	1
29	108511	Belt Guide - "V" Idler	1
31	9475	Spacer - Clutch Bar	1
32	MW8821	Flat Idler Pulley	1
33	106382	Bar - Clutch	1
34	900064	Carriage Bolt 3/8-16 x 1 1/4	1
35	915113	Eslok Nut 3/8-16	1
36	920038	Washer 5/16 U.S.	2
37	920039	Washer 3/8 U.S.	3
38	106300	Parking Brake Lever	1
39	101765	Flange Bushing	1
40	102025	Spacer - Parking Brake	1
41	102809	Flange Locknut 3/8-16	1
42	6820	Grip	1
43	908038	Bolt 3/8-16 x 2	1
44	920009	Washer 3/8 SAE	2
45	107788	Spring	1
46	2844	Special Washer	1
47	6739	Trunnion	1
48	7602	Spring	1
49	932008	Cotter Pin 3/32 x 3/4	2
50	920155	Internal Tooth Lockwasher 5/16	1

SECTION 7 - ATTACHMENT LIFT



0722

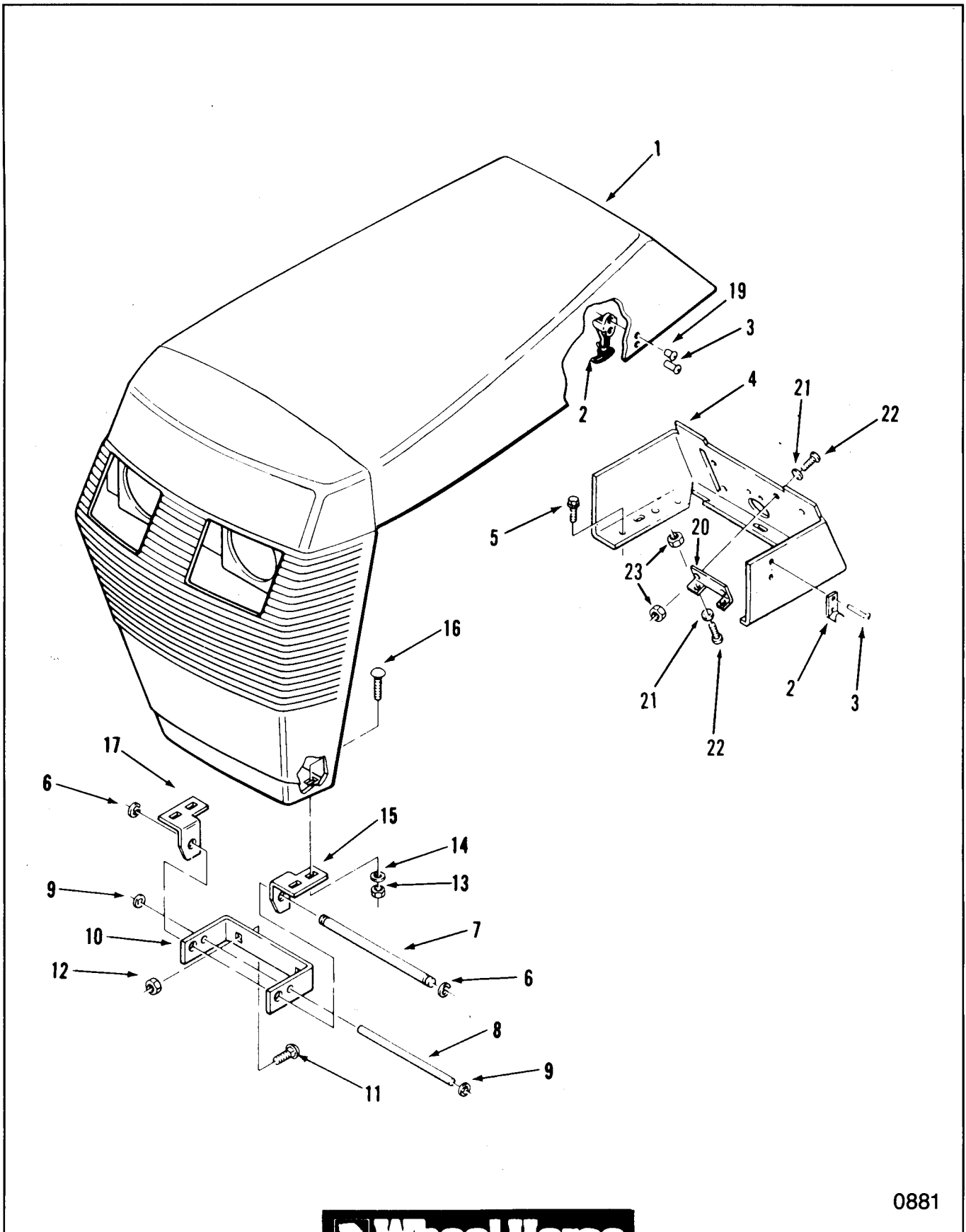


Figure 7-1 Attachment Lift

SECTION 7 - ATTACHMENT LIFT

ITEM	PART NUMBER	DESCRIPTION	Quantity
Figure 7-1			
ATTACHMENT LIFT			
1	109170	Lift Lever	1
2	6542	Grip	1
3	105316	Rod Cap	1
4	933148	Spirol Pin 1/8 x 1/2	1
5	8130	Spring Retainer	1
6	3624	Spring	1
7	109177	Bracket	1
8	908017	Bolt 5/16-18 x 3/4	2
9	915112	Eslok Nut 5/16-18	6
10	104822	Retaining Ring	1
11	900062	Carriage Bolt 3/8-16 x 3/4	2
12	915113	Eslok Nut 3/8-16	2
13	109336	Lift Rod	1
14	920011	Washer 1/2 SAE	3
15	932017	Cotter Pin 1/8 x 1	3
16	109333	Lift Shaft	1
17	106288	Clamp	2
18	920039	Washer 3/8 U.S.	2
19	900036	Carriage Bolt 5/16-18 x 5/8	4

SECTION 8 - FRAME, SHEET METAL AND COVERS



0881

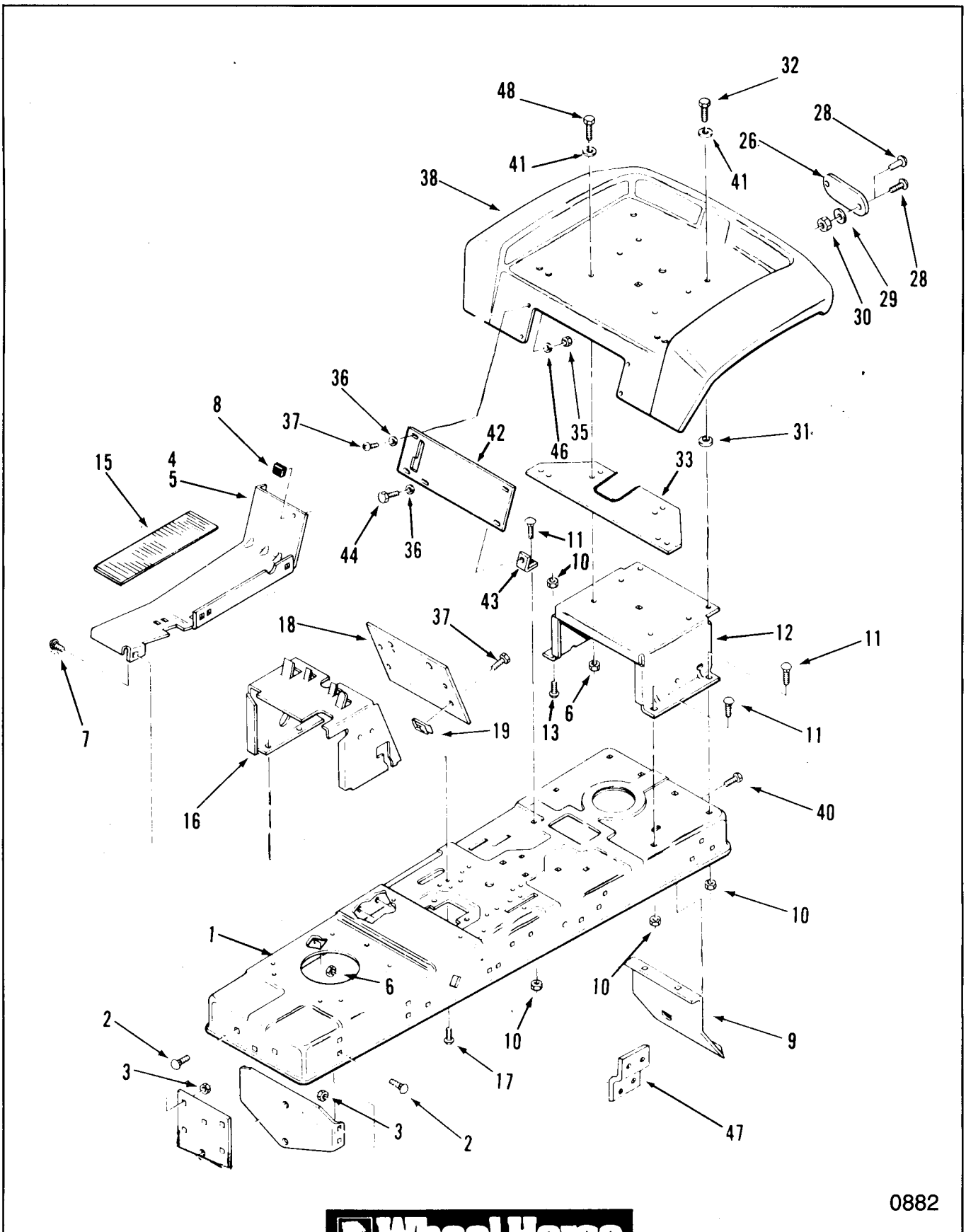


Figure 8-1 Frame, Sheet Metal and Covers

SECTION 8 - FRAME, SHEET METAL AND COVERS

ITEM	PART NUMBER	DESCRIPTION	Quantity
Figure 8-1			
FRAME, SHEET METAL AND COVERS			
1	113458	Hood	1
2	106825	Hood Latch Assy (109236 Handle 109237 Latch)	2
3	923785	Pop Rivet - 1/8 Dia. x .294	4
4	112472	Console 252-H	1
	112704	Console 257-H	1
5	926694	S.T. Bolt 5/16-18 x 5/8	3
6	105797	"E" Ring	2
7	108458	Rod - Pivot	1
8	108243	Rod - Pivot Stop	1
9	5466	Speed Nut	2
10	112695	Bracket - Hood Pivot	1
11	900038	Carriage Bolt 5/16-18 x 1	2
12	915112	Eslok Nut 5/16-18	2
13	915661	E.S. Nut 1/4-20	4
14	920007	Washer 1/4 SAE	4
15	109146	Bracket - Grille Pivot LH	1
16	900015	Carriage Bolt 1/4-20 x 3/4	3
16	900016	Carriage Bolt 1/4-20 x 1	1
17	109145	Bracket - Grille Pivot RH	1
19	923784	Pop Rivet - 1/8 Dia x .232	4
20	112506	Braket 257-H	1
21	920150	Internal Tooth Lockwasher 257-H	4
22	9107622	Screw Nr. 6-32 x 3/8 Black 257-H	4
23	915960	Nut Nr. 6-32	4

SECTION 8 - FRAME, SHEET METAL AND COVERS



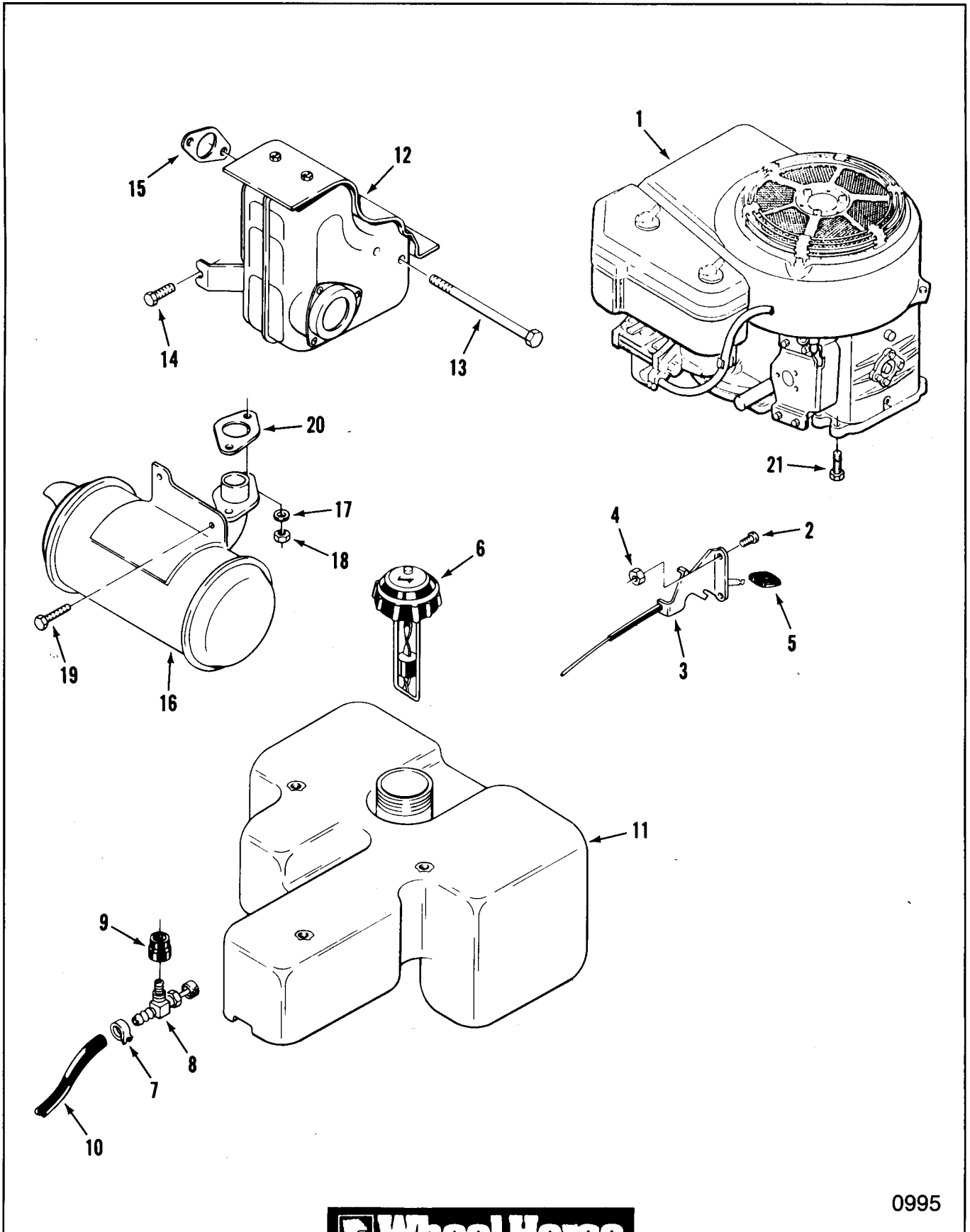
0882

Figure 8-2 Frame, Sheet Metal and Covers

SECTION 8 - FRAME, SHEET METAL AND COVERS

ITEM	PART NUMBER	DESCRIPTION	Quantity
Figure 8-2			
FRAME, SHEET METAL AND COVERS			
1	113871	Frame	1
2	900037	Carriage Bolt 5/16-18 x 3/4	7
3	915662	Elastic Nut 5/16-18	7
4	110516	Footrest RH	1
5	110515	Footrest LH	1
6	915662	E.S. Nut 5/16-18	7
7	900037	Carriage Bolt 5/16-18 x 3/4	8
8	518211	Rubber Bumper	2
9	112703	Hitch - Drawbar	1
10	915662	E.S. Nut 5/16-18	6
11	900037	Carriage Bolt 5/16-18 x 3/4	1
12	112748	Support - Seat	1
13	900036	Carriage Bolt 5/16-18 x 5/8	4
15	110180	Footrest Pad 220-4, 222-5	2
	114842	Footrest Rubber Pad RH 227-5	1
	114841	Footrest Rubber Pad LH 227-5	1
16	114691	Hoodstand	1
17	926694	S.T. Screw 5/16-18 x 5/8	4
18	113368	Hoodstand Plate	1
19	107069	Speed Nut 1/4-20	4
26	108547	Reflector - Rear	2
28	109193	Pop Rivet 3/16 x .570 Aluminium (Production)	4
	910808	Screw = 10-32 x 5/8 (Optional)	4
29	920079	Lockwasher = 10 (Optional)	4
30	915551	Nut = 10-32 (Optional)	4
31	2844	Special Washer	2
32	908017	Bolt 5/16-18 x 3/4	3
33	114288	Seat Plate	1
35	915111	Jam Nut 1/4-20	4
36	920007	Washer 1/4 SAE	4
37	910837	Pan HD. Screw 1/4-20 x 5/8	8
38	112471	Fender	1
40	908016	Bolt 5/16-18 x 5/8	2
41	920008	Washer 5/16 SAE	5
42	113027	Front Fender Plate	1
43	110511	Fender Bracket	1
44	926671	S.T. Bolt 1/4-20 x 1/2	1
46	920081	Lockwasher 1/4	4
47	111739	Switch Bracket	1
48	900038	Carriage Bolt 5/16-18 x 1	1

SECTION 9 - ENGINE, FUEL & EXHAUST SYSTEMS



0995



Figure 9-1 Engine, Fuel & Exhaust Systems

SECTION 9 - ENGINE, FUEL & EXHAUST SYSTEMS

ITEM	PART NUMBER	DESCRIPTION	Quantity
Figure 9-1			
ENGINE, FUEL & EXHAUST SYSTEMS			
1	114135	Engine - 9 HP - Kawasaki, model FC-290 V	X
	114126	Engine - 12.5 HP - Kawasaki Model FB460 V	X
	113487	Engine - 17 HP - Kawasaki Model FC540 V	X
2	910792	Screw = 10-24 x 1/2	2
3	110684	Choke/Throttle Control	1
4	915740	Nut = 10-24	2
5	108917	Knob	X
6	113867	Gasoline Gauge Cap	1
7	108898	Hose Clamp	2
8	104048	Fuel Valve	1
9	104047	Bushing	1
10	114572	Fuel Hose 54 in. (137.2 cm)	1
11	114622	Fuel Tank	1
12	KW10256	Muffler 220-4 (FC-290 V)	1
	KW10255	Muffler 222-5 (Kawasaki = 49069-2180-9Y)	1
13	KW10691	Special Bolt 222-5 (Kawasaki = 92002-2321)	2
14	KW10033	Bolt 8 x 12 222-5 (Kawasaki = 130G0812)	1
15	KW10289	Gasket 222-5 (Kawasaki = 11009-2527)	1
16	112475	Muffler 227-5	1
17	920082	Lockwasher 5/16 257-H	2
18	112190	Nut M 8x1.25 257-H	2
19	113114	Bolt M8x1.25 x 15 257-H	2
20	KW10250	Gasket 257-H (Kawasaki = 11009-2515A)	1
21	KW10035	Bolt 8x45 (Kawasaki = 130GO845)	4

SECTION 11 - ELECTRICAL SYSTEM

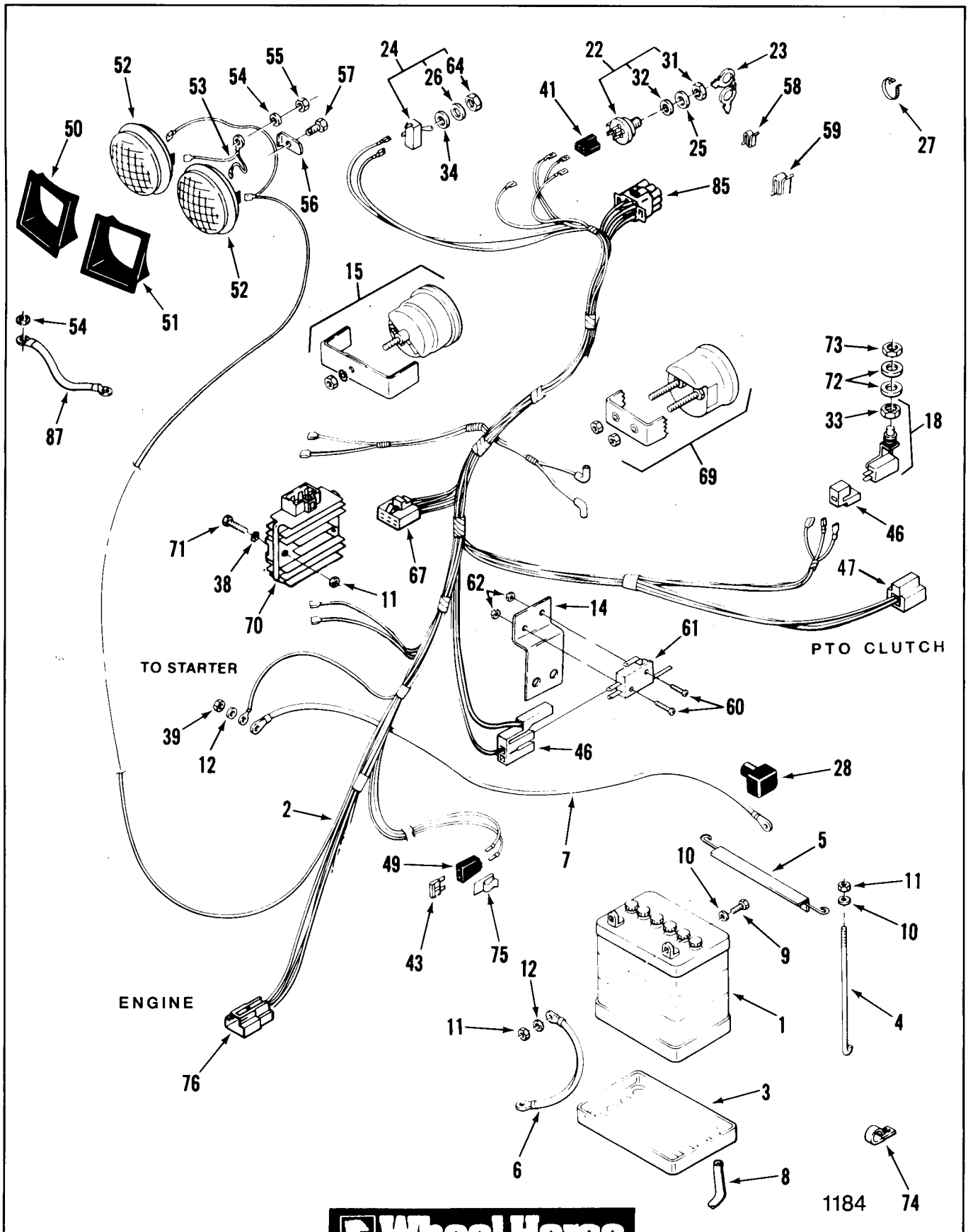


Figure 11-1 Electrical System

SECTION 11 - ELECTRICAL SYSTEM

17

ITEM	PART NUMBER	DESCRIPTION	Quantity
Figure 11-1			
ELECTRICAL SYSTEM			
1	104962	Battery - 24 amp hour	1
2	112963	Wiring Harness 220-4	1
	112964	Wiring Harness 222-5	1
	112709	Wiring Harness 227-5	1
3	106948	Battery Tray	1
4	109547	Hook	2
5	113010	Battery Angle	1
6	111076	Wire (14" Battery to Ground)	1
7	111077	Wire (23" Solenoid to Battery)	1
8	114720	Drain Tube	1
9	908003	Bolt 1/4-20 x 3/4	2
10	920007	Washer 1/4 SAE	6
11	915111	Nut 1/4-20	7
12	920081	Lockwasher 1/4	1
14	111739	Brake Switch Bracket	1
15	110853	Hourmeter (Includes 108768 clamp, 915538 Nr. 10-24 Nut & 920120 Ext. Tooth Lockwasher)	1
18	114240	Seat Switch	1
22	111215	Ignition Switch (includes items 31 & 32)	1
23	111220	Ignition Key (Set of 2)	1
	111214	Padded Ignition Key (Set of 2)	1
24	102138	Light Switch (includes items 33 & 34)	1
25	920262	Special Washer	1
26	920259	Special Washer	1
27	100571	Cable Tie	1
28	109553	Battery Terminal Cover	2
31	101884	Switch Nut	1
32	920160	Internal Tooth Lockwasher	1
38	920122	External Tooth Lockwasher 1/4	1
39	915234	Hex Jam Nut 1/4-20	1
41	105302	5-Terminal Connector (part of item 2)	1
43	109355	15 amp ATO Fuse	1
	109102	25 amp ATO Fuse	1
46	111498	Connector Body (part of item 2)	2
47	109357	2-Terminal Connector (part of items 2)	1
49	113133	Fuse Holder	2

SECTION 11 - ELECTRICAL SYSTEM

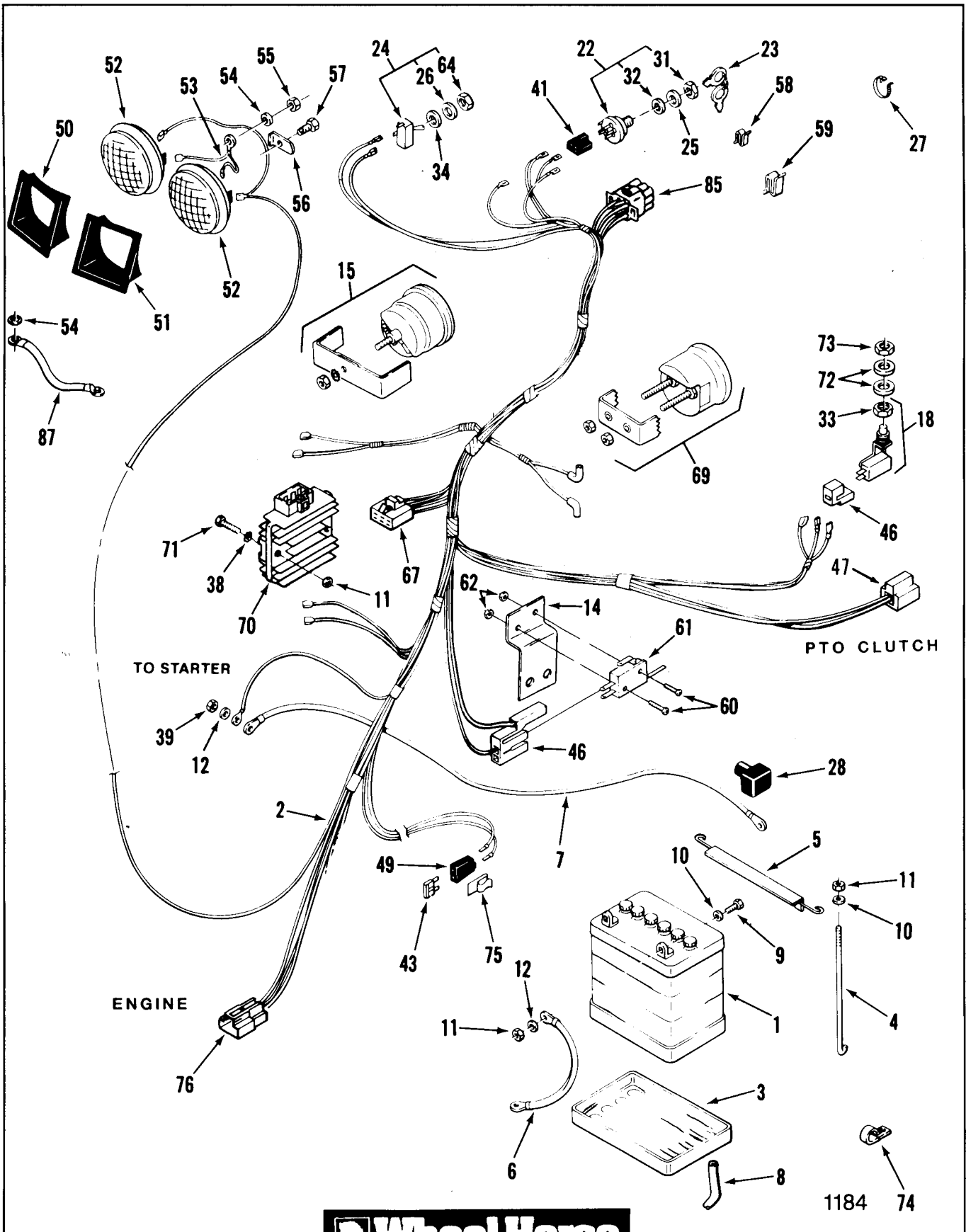


Figure 11-1 Electrical System

SECTION 11 - ELECTRICAL SYSTEM

ITEM	PART NUMBER	DESCRIPTION	Quantity
Figure 11-1			
ELECTRICAL SYSTEM (CONT'D)			
50	109494	Bezel RH	1
51	109495	Bezel LH	1
52	102881	Headlight	2
53	108130	Ground Wire	1
54	920155	Internal Tooth Lock Washer 5/16	2
55	915112	Nut 5/16-18	1
56	109459	Lock	2
57	926671	S.T. Bolt	2
58	8830	Clip	1
59	3023	Clip 1/16	X
	519337	Clip 1/8	X
60	910478	Screw = 4-40 x 1 1/4	2
61	111332	Parking Brake & Clutch Pedal Switch	2
62	915732	E.S. Hex Nut = 4-40	2
67	59221-2099	Connector Body (part of item 2)	1
69	110741	Voltmeter (Includes 109650 Clamp & 5924 = 10-32 Nut)	1
70	KW-10083	Voltage Regulator (Kawasaki = 21066-2004), 220-4, 222-5	1
	KW-10253	Voltage Regulator (Kawasaki = 21066-2056) 227-5	1
71	960155	Whizlock Bolt 1/4-20 x 1/2	2
72	920263	Switch Spacer	1
73	112419	Special Hex Nut	1
74	105490	Clamp	1
75	112364	Fuse Holder Mounting Clip	1
76	112362	3 Contact Lock Type Connector (part of 2)	1
85	113118	9-Terminal Connector	1
87	113463	Ground Wire 7 1/2"	1

SECTION 11 - ELECTRICAL SYSTEM

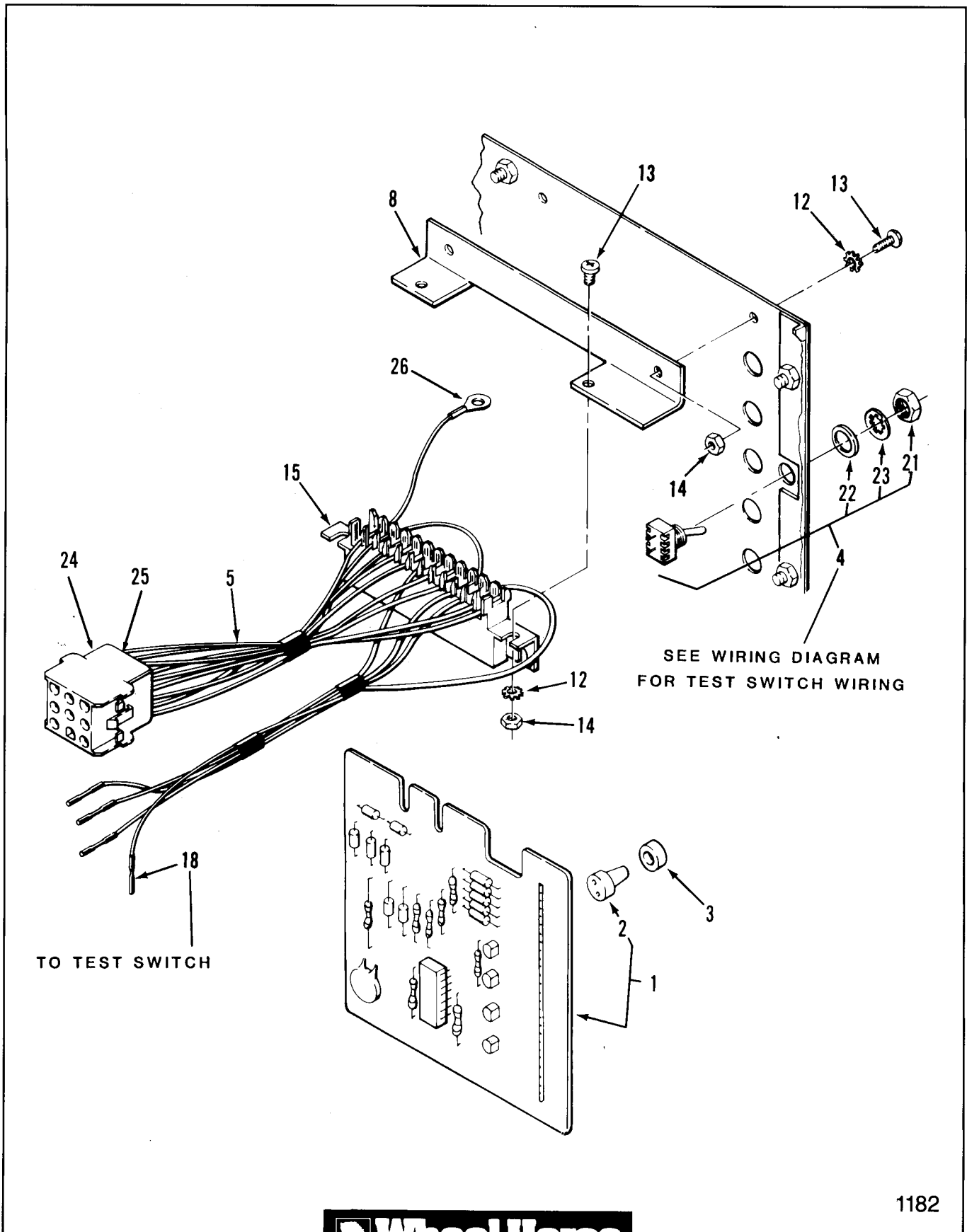


Figure 11-2 Electrical System

SECTION 11 - ELECTRICAL SYSTEM

ITEM	PART NUMBER	DESCRIPTION	Quantity
Figure 11-2			
ELECTRICAL SYSTEM - 227-5			
1	111390	P.C Board (Includes item 2)	1
2	111331	Indicator Lights	4
3	111343	Lens and Bushing	4
4	111353	Toggle Switch	1
5	113139	Indicator Lights Wiring Harness	1
8	112506	Bracket	1
12	920150	External Tooth Lockwasher = 6	4
13	910762	Pan Hd Cross Recess Machine Screw = 6-32 x 3/8	4
14	915960	Hex Machine Nut = 6-32	4
15	111374	Molex Connector (Part of item 5)	1
18	111485	Terminal (Part of item 5)	2
21	111359	Hex Nut	1
22	111360	Locking Ring Washer	1
23	111767	Lockwasher	1
24	113119	9-Circuit Receptacle	1
25	113123	Socket	9
26	113164	No. 6 Ring Terminal	1

SECTION 13 - WHEELS AND TIRES

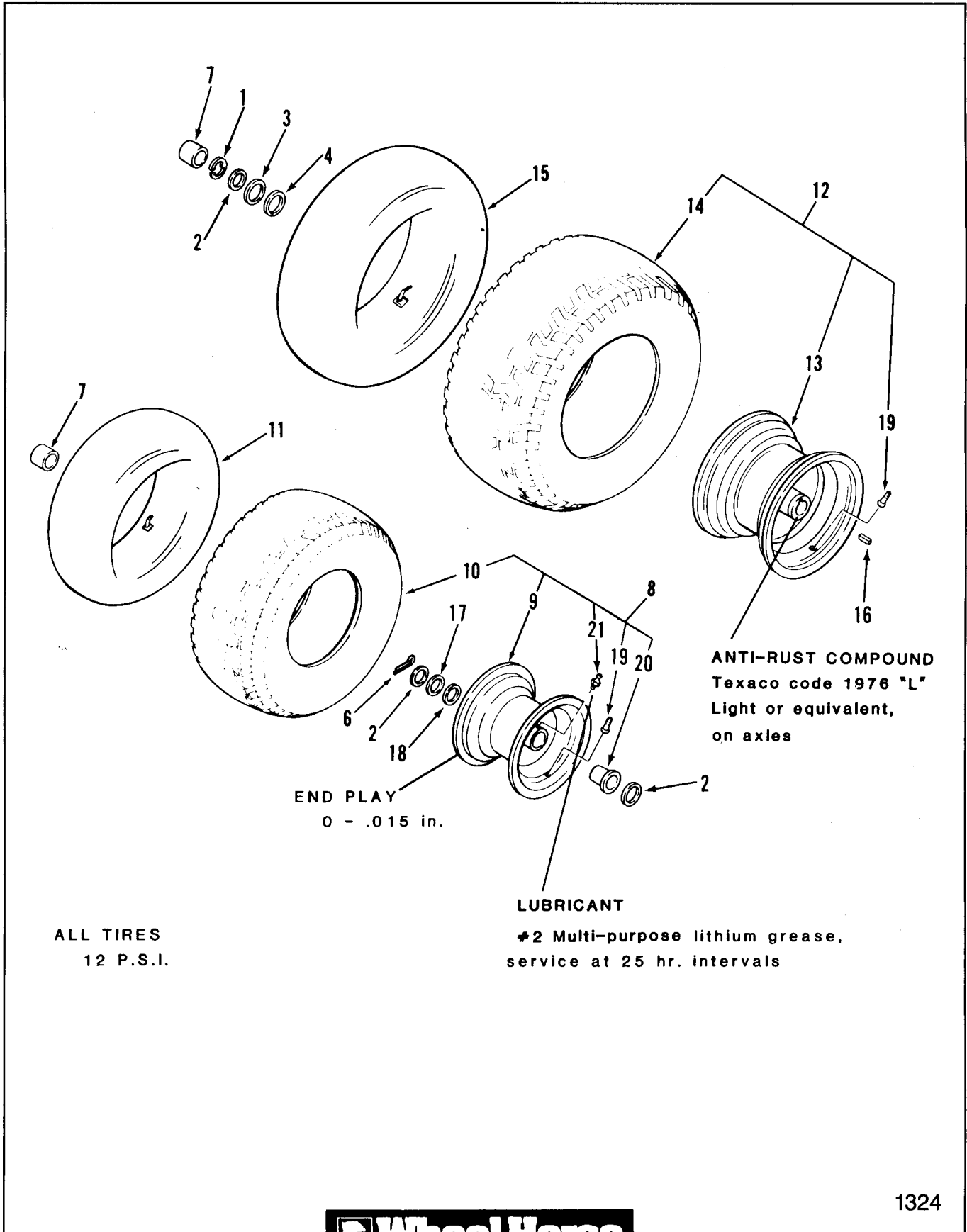
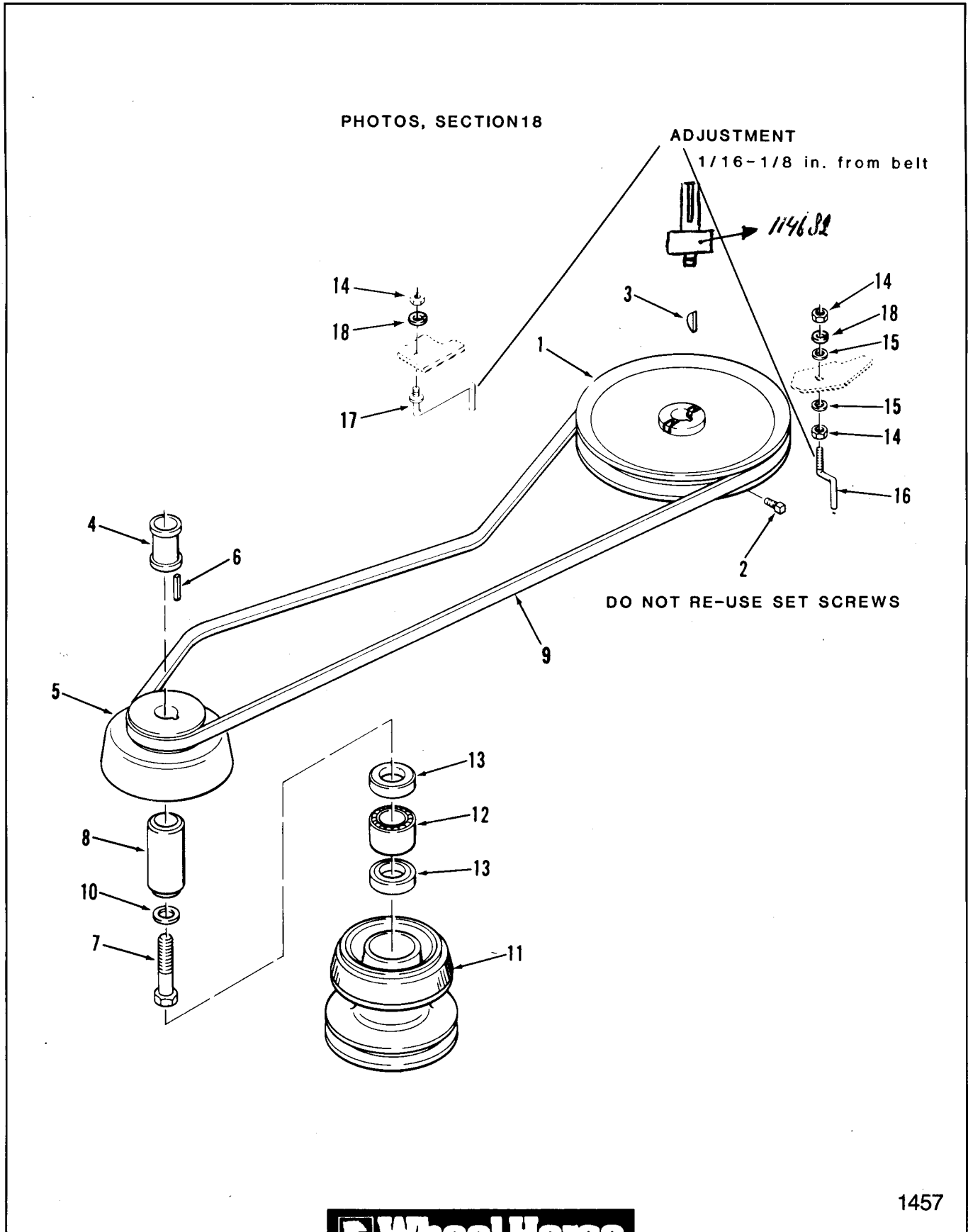


Figure 13-1 Wheels and Tires

SECTION 13 - WHEELS AND TIRES

ITEM	PART NUMBER	DESCRIPTION	Quantity
Figure 13-1			
WHEELS AND TIRES			
1	104636	"E" Ring	2
2	109262	Special Washer - Hubcap	6
3	5210	Shim Washer .015	X
4	1278	Shim Washer .050	X
6	932026	Cotter Pin 5/32 x 1 1/4	2
7	109261	Hub Cap	4
8	113395	Assy - Wheel & Tire Front 4-Speed Only	2
	110706	Assy - Wheel & Tire Front 5-Speed Only	2
9	113394	Front Wheel 4-Speed Only	1
	110907	Front Wheel 5-Speed Only	1
10	8188	Front Tire 13 x 5.00-6 - 4-Speed Only	1
	104307	Front Tire 13 x 6.50-6 - 5-Speed Only	1
11	100043	Front Tube - Service Only - 4-Speed Only	1
	101779	Front Tube - Service Only - 5-Speed Only	1
12	110709	Assy - Wheel & Tire - Rear 4-Speed Only - 220-4	2
	110710	Assy - Wheel & Tire - Rear 5-Speed Only - 222-5	2
	111741	Assy - Wheel & Tire - Rear - 5-Speed Only - 227-5	1
13	110711	Rear Wheel 4-Speed Only 220-4, 222-5	1
	110817	Rear Wheel 5-Speed Only 227-5	1
14	8191	Rear Tire 18 x 8.50-8 - 4-Speed Only 220-4	1
	105451	Rear Tire 18 x 9.50-8 - 5-Speed Only 222-5	1
	108807	Rear Tire 20 x 10-10 - 5-Speed Only 227-5	1
15	8462	Rear Tube - Service Only - 4-Speed Only	1
	100040	Rear Tube - Service Only - 5-Speed Only	1
16	1120	Sq Key 3/16 x 1 3/4	2
17	1278	Shim Washer .050	X
18	5210	Shim Washer .015	X
19	5108	Valve Stem (Tubeless Tire)	1
20	100166	Flange Bushing	2
21	1030	Grease Fitting 5-Speed Only	1
	109500	Grease Fitting 3-Speed Only	1

SECTION 14 - CLUTCHES AND PULLEYS



1457



Figure 14-1 Drive Belt and Pulleys

SECTION 14 - CLUTCHES AND PULLEYS

ITEM	PART NUMBER	DESCRIPTION	Quantity
Figure 14-1			
DRIVE BELT AND PULLEYS			
1	114685	Pulley - Transmission 220/4 - 222/5	1
	114684	Pulley - Transmission 227-5	1
2	909540	Sq. Hd. Set Screw 5/16-18 x 1/2 Eslok	2
3	937225	Hi-Pro Key = 9 - 3/16 x 3/4	1
4	106563	Tube Spacer LT-1100 Only	1
	109731	Tube Spacer LT-1600 Only	1
5	108408	Pulley - Engine 220-4 + 222-5	1
	112468	Engine Pulley 227-5	1
6	105453	Sq Key 144 x 5/8	1
7	908195	Eslok Bolt 7/16-20 x 1	1
8	106564	Bearing Race 220-4 + 222-5	1
	112469	Bearing Race 227-5	1
9	108427	Belt - Transmission Drive	1
10	107750	Special Washer 220-4 + 222-5	1
	920265	Special Washer 227-5	1
11	106565	Assy - Pulley - Mower Drive	1
12	106769	Needle Bearing	1
13	6663	Oil Seal	2
14	915112	Eslok Nut 5/16-18	3
15	920008	Washer 5/16	2
16	108397	Belt Guide	1
17	109041	Belt Guide	1
18	920082	Lockwasher 5/16	2

SECTION 14 - CLUTCHES AND PULLEYS

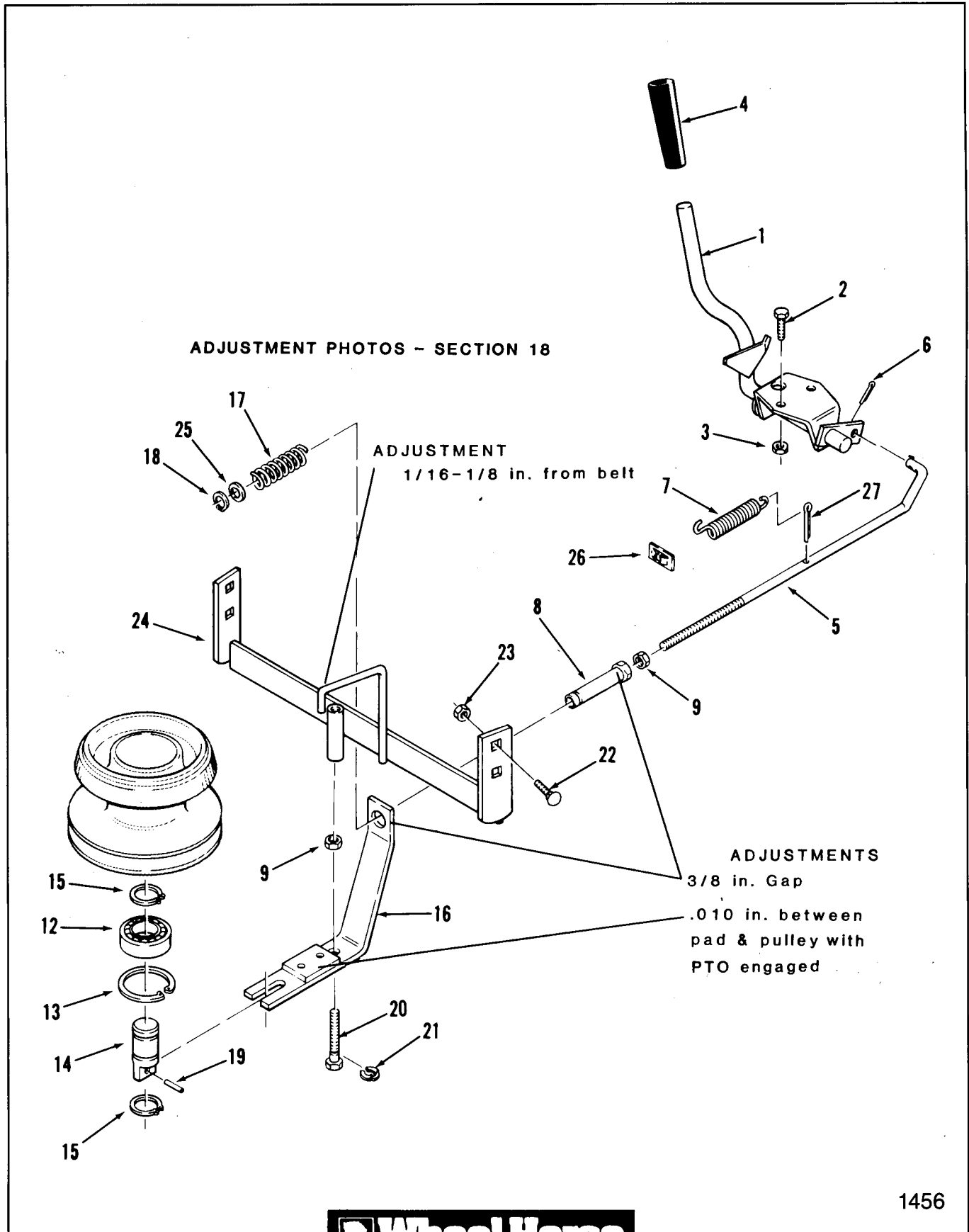
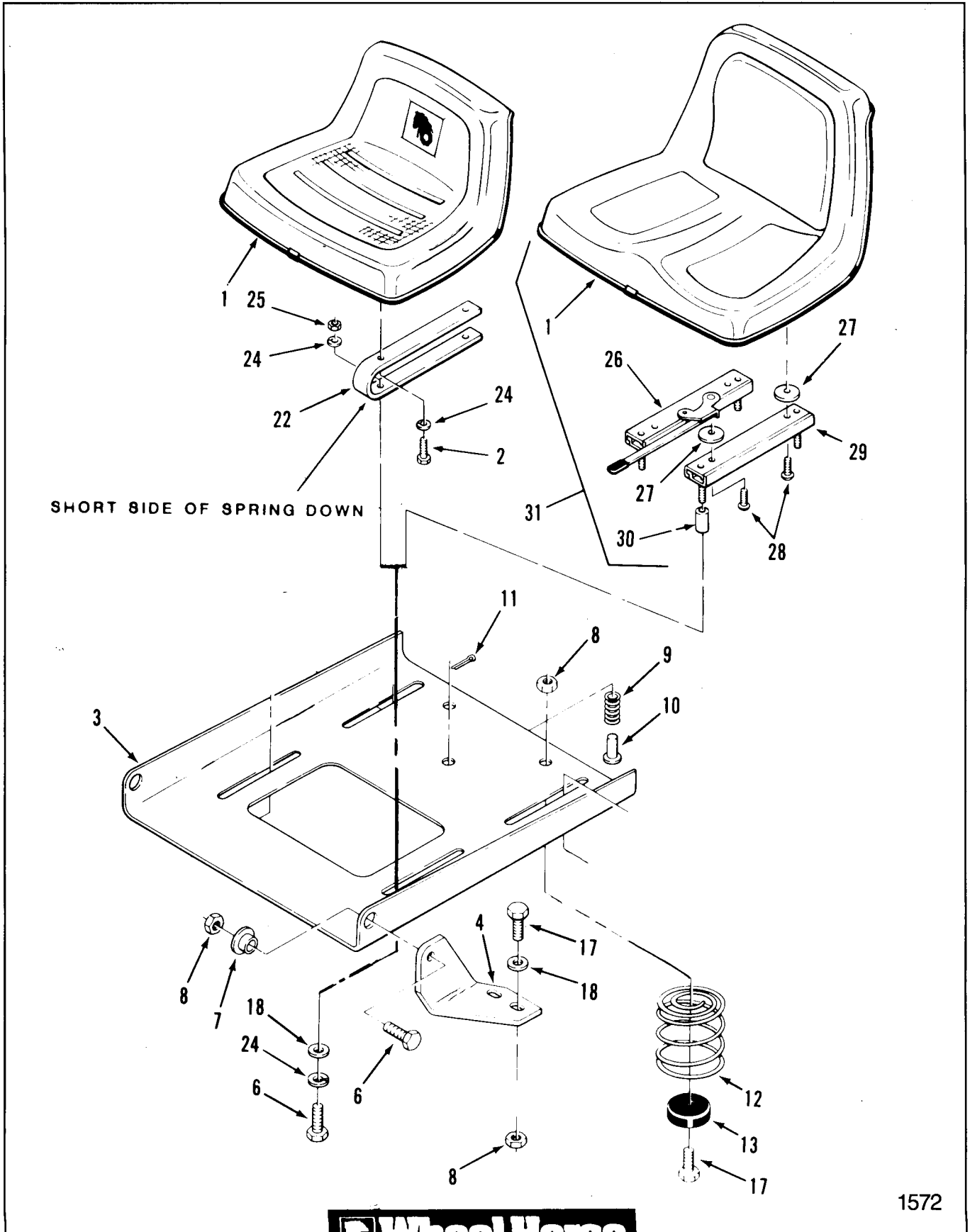


Figure 14-2 PTO Clutch

SECTION 14 - CLUTCHES AND PULLEYS

ITEM	PART NUMBER	DESCRIPTION	Quantity
Figure 14-2			
PTO CLUTCH			
1	109179	PTO Clutch Lever	1
2	908016	Bolt 5/16-18 x 5/8	2
3	915112	Eslok Nut 5/16-18	2
4	9038	Grip	1
5	108426	PTO Clutch Rod	1
6	932008	Cotter Pin 3/32 x 3/4	1
7	1014	Spring	1
8	107818	Treaded Spacer - PTO Clutch	1
9	915235	Jam Nut 5/16 - 18	2
12	109842	Ball Bearing	1
13	936032	Internal Snap Ring 1 3/4	1
14	107747	Shaft - Clutch Housing	1
15	936125	External Snap Ring 3/4	2
16	109346	Clutch Brake Bracket	1
17	106573	Spring - Clutch LT-1100 Only	1
17	109832	Spring - Clutch LT-1600 Only	1
18	107825	Snap ring - Special	1
19	933198	Spirol Pin 7/32 x 7/8	1
20	107748	Screw - Clutch Adjust	1
21	107772	Retaining Ring	1
22	900037	Carriage Bolt 5/16-18 x 3/4	4
23	915112	Eslok Nut 5/16-18	4
24	108459	Clutch Mounting Bracket LT-1100 Only	1
24	108411	Clutch Mounting Bracket LT-1600 Only	1
25	920259	Special Washer	1
26	7721	Speed Nut	1
27	932016	Cotter Pin 1/8 x 3/4	1

SECTION 15 - SEAT AND DECALS



1572

Figure 15-1 Seat and Suspension

SECTION 15 - SEAT AND DECALS

ITEM	PART NUMBER	DESCRIPTION	Quantity
Figure 15-1			
SEAT AND SUSPENSION			
1	105259	Seat 220-4, 222-5	1
	109986	Seat 227-5	1
2	908017	Bolt 5/16-18 x 3/4	4
3	112478	Seat Pivot Plate	1
4	112745	LH Pivot Bracket	1
	112744	RH Pivot Bracket	1
6	908018	Bolt 5/16-18 x 7/8	4
7	105503	Bushing	2
8	915662	E.S. Nut 5/16-18	6
9	114267	Spring	1
10	106449	Pin	1
11	932008	Cotter Pin 3/32 x 3/4	1
12	114496	Spring 220-4	2
	114497	Spring 222-5 & 227-5	3
13	108889	Bumper	2
17	908019	Bolt 5/16 - 18 x 1	6
18	920008	Washer 5/16 SAE	6
22	110920	Seat Spring	2
24	920082	Lockwasher 5/16	4
25	915112	Nut 5/16-18	4
26	109987	Adjuster RH	1
27	109989	Spacer	4
28	910865	Screw 5/16-18 x 3/4	4
29	109988	Adjuster LH	1
30	110932	Spacer	4
31	110998	Deluxe Seat Assembly	1

SECTION 15 - SEAT AND DECALS

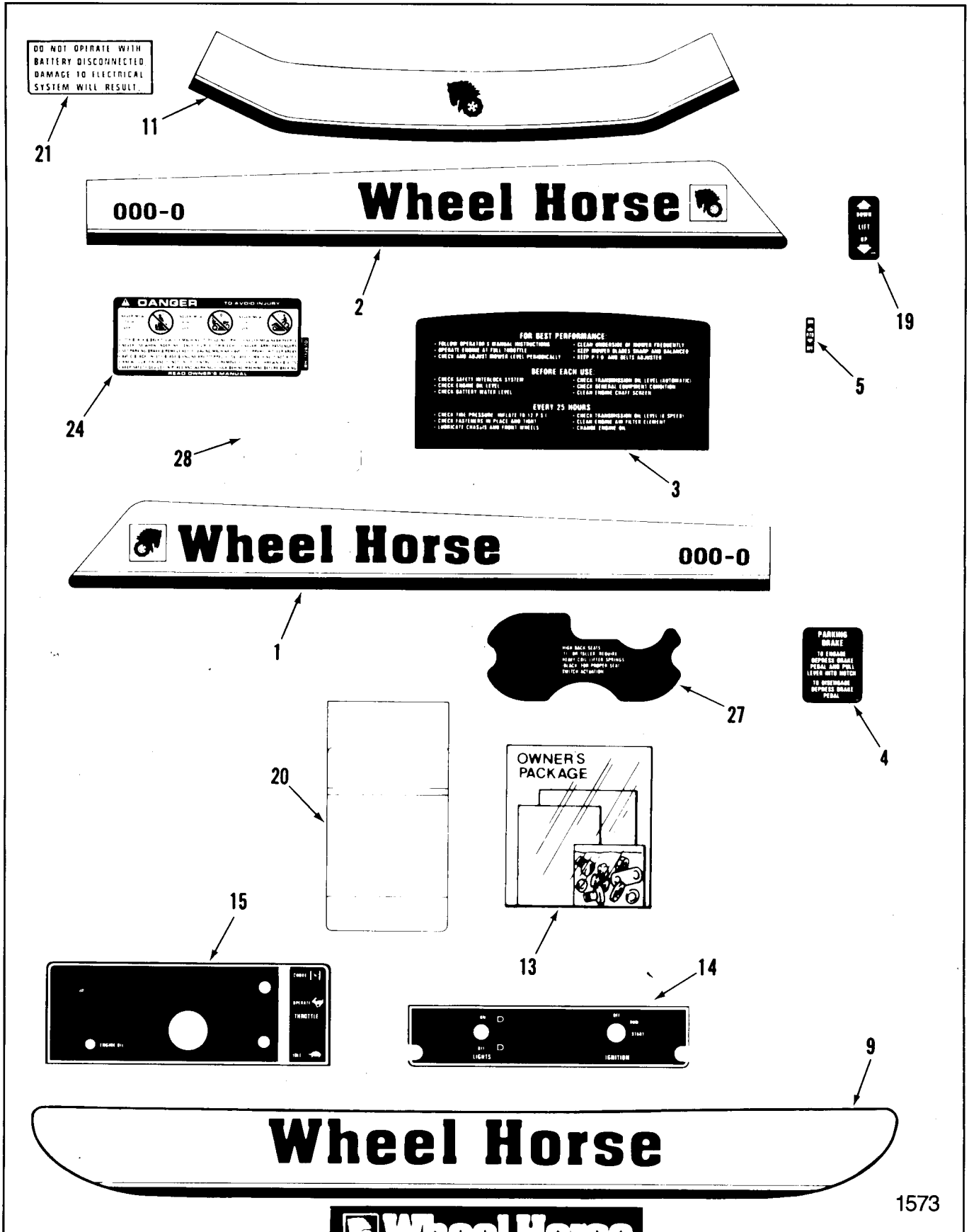
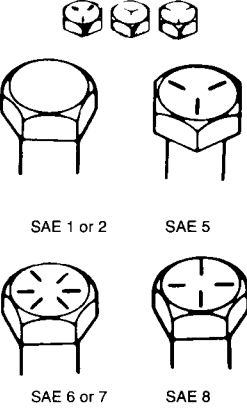


Figure 15-2 Decals, Miscellaneous

SECTION 15 - SEAT AND DECALS

ITEM	PART NUMBER	DESCRIPTION	Quantity
Figure 15-2			
DECALS, MISCELLANEOUS			
1	114504	Decal - Hood RH 220-4	X
	114122	Decal - Hood RH 222-5	X
	114921	Decal - Hood RH 227-5	X
2	114503	Decal - Hood LH 220-4	X
	114123	Decal - Hood LH 222-5	X
	114921	Decal - Hood LH 227-5	X
3	114929	Decal - Rear Hood 227-5	1
	111194	Decal - Rear Hood 220-4, 222-5	1
4	111509	Decal - Parking Brake	1
5	111960	Decal - PTO Clutch	1
9	114925	Decal - Rear Fender 227-5	1
	110629	Decal - Rear Fender 220-4, 222-5	1
11	114926	Decal - Front Hood 227-5	1
	110626	Decal - Front 220-4, 222-5	1
13	807175	New Tractor Loose Parts Package 220-4	X
	807174	New Tractor Loose Parts Package 222-5	X
	807157	New Tractor Loose Parts Package 227-5	X
14	111664	Decal - Switch	1
15	111505	Decal - Dash 220-4, 222-5	1
	112832	Decal - Dash 227-5	1
19	112168	Decal - Lift	1
20	111193	Decal - Maintenance	1
21	111926	Decal - Electric System	1
24	112670	Decal - Danger	1
27	114296	Decal - Seat Lifter	1
28	112403	Decal - VIN Overlay	1
	112965	Decal - Shift 220-4 (Not illustrated)	1
	114518	Decal - Shift 222-5 (Not illustrated)	1
	111507	Decal - Shift 227-5 (Not illustrated)	1
	111342	Decal - Europa (Not illustrated)	2

TORQUE SPECIFICATIONS

BOLT HEAD MARKINGS	BOLT BODY SIZE In. - Thread	SAE GRADE 1 or 2		SAE GRADE 5		SAE GRADE 6 or 7		SAE GRADE 8	
		Torque		Torque		Torque		Torque	
		Ft-Lb	Nm	Ft-Lb	Nm	Ft-Lb	Nm	Ft-Lb	Nm
<p>Manufacturer's marks may vary. Three-line markings on heads shown below, for example, indicate SAE Grade 5.</p>  <p>SAE 1 or 2 SAE 5</p> <p>SAE 6 or 7 SAE 8</p>	1/4-20 -28	5 6	6.8 8.1	8 10	10.8 13.6	10 13.6	12 14	16.2 19.0	
	5/16-18 -24	11 13	15.0 17.6	17 19	23.0 25.8	19 25.8	24 27	32.5 36.6	
	3/8-16 -24	18 20	24.4 27.1	31 35	42.0 47.5	34 46.1	44 49	59.7 66.4	
	7/16-14 -20	28 30	38.0 40.7	49 55	66.4 74.6	55 74.6	70 78	95.0 105.8	
	1/2-13 -20	39 41	52.9 55.6	75 85	101.7 115.2	85 115.2	105 120	142.4 162.7	
	9/16-12 -18	51 55	69.1 74.6	110 120	149.1 162.7	120 162.7	155 170	210.1 230.5	
	5/8-11 -18	83 95	112.5 128.8	150 170	203.3 230.5	167 226.4	210 240	284.7 325.4	
	3/4-10 -16	105 115	142.4 155.9	270 295	366.1 400.0	280 379.6	375 420	508.4 569.4	
	7/8- 9 -14	160 175	216.9 237.3	395 435	535.5 589.8	440 596.6	605 675	820.8 915.2	
	1- 8 -14	235 250	318.7 339.0	590 660	799.9 894.8	660 894.8	910 990	1233.8 1342.2	

FUEL LINE

50' bulk fuel line ID .250 x OD .550 = 112570

FASTENERS

- All hex bolts GRADE 5 minimum, GRADE 8 used as noted.
- All carriage bolts GRADE 1 unless otherwise noted.
- In place of ESLOK or E.S. nuts, use LOCTITE or lock washers with free running nuts.

PAINT

Red Enamel — 6 cans, order = 8-0311

Red Enamel — Quart can = 5340 (Non-aerosol)*

Beige Enamel — 6 cans, order = 8-0321

Black Enamel — 6 cans, order = 8-0334

Pewter Metallic Enamel — 6 cans, order = 8-0335

(Automotive Equivalent: 1971 Lincoln-Mercury Pewter Metallic)

White Enamel — 6 cans, order = 8-0336

Pewter Gray Enamel — 6 cans, order = 8-0337

(Automotive Equivalent: 1982 Lincoln Light Pewter)

Silver Metallic Enamel — 6 cans, order = 8-0338

Pewter Gray Enamel — Quart can = 5347 (Non aerosol)**

* Thinning — use automotive enamel reducer with zylol (slow drying time)
or toluol (fast drying time) — no mineral spirits

** Thin with zylol